

LCP / OSP CONNECTORS

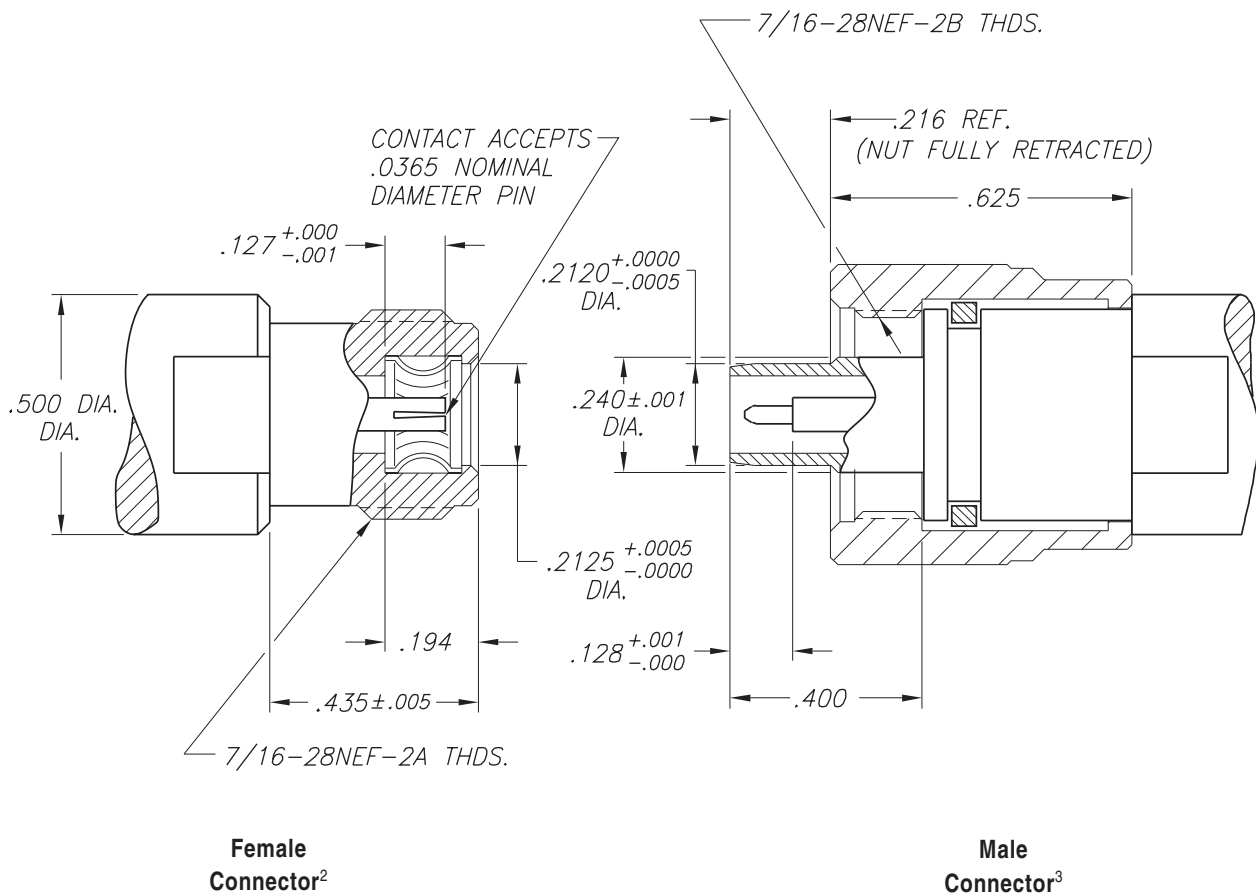
INTERFACE DIMENSIONS

Description

The LPC/OSP¹ connectors are designed to provide a precisely repeatable mated interface for calibration purposes and for test of production components which use the standard OSP series blind-mate connectors.

Interface dimensions of the LPC/OSP connectors are tightly controlled, and a threaded coupling mechanism,

utilizing a retractable, hexagonal coupling nut on the male connector, permit the use of a calibrated torque wrench (8 inch-lb) to further improve the repeatability of the electrical performance of the mated pair. Both the female and male LPC/OSP connectors are fully mating compatible with the standard OSP series and Dynawave/Dynamate⁴ series blind-mate connectors.

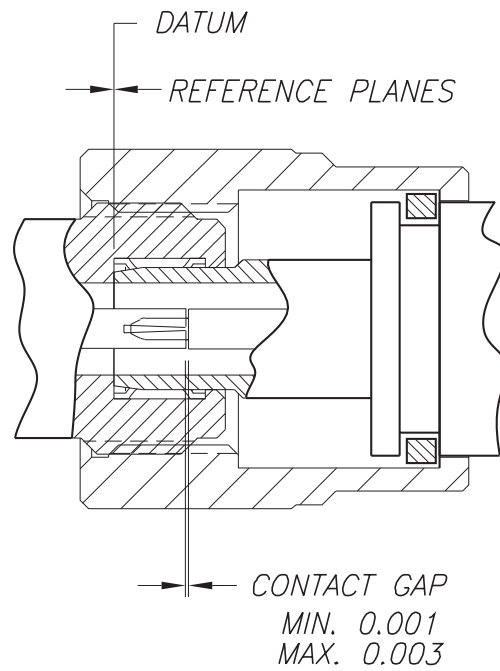


¹ OSP is a trademark of M/A-Com.

² This interface is mateable to M/A-Com OSP and Dynawave Dynamate male blindmate connectors.

³ This interface is mateable to M/A-Com OSP and Dynawave Dynamate female blindmate connectors.

⁴ Dynamate is a trademark of Dynawave, Inc.



LPC/OSP Precision Connector
Interface Dimensions