

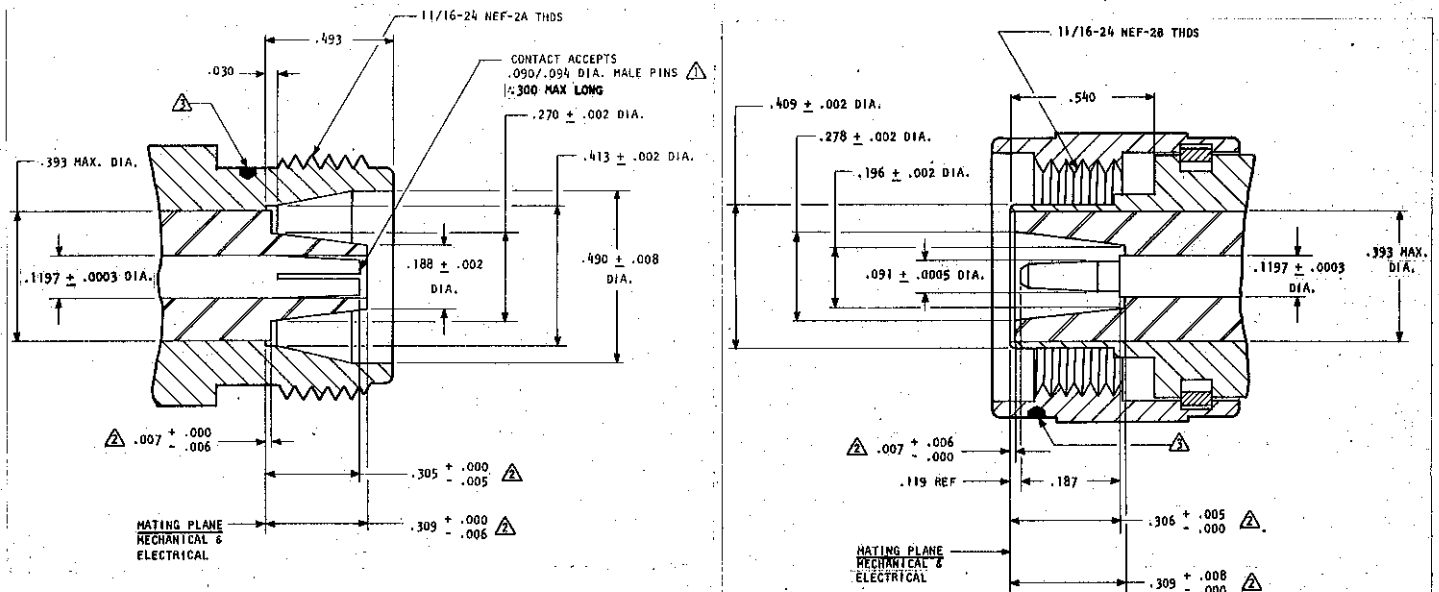


PRECISION SC CONNECTORS (MPC/SC)
 INTERFACE DIMENSIONS AND MARKING IDENTIFICATION
 CRITICAL COAXIAL LINE PARAMETERS

28 June 74

DESCRIPTION:

MMC Precision SC Connectors are designated as "MPC/SC" and the critical interface parameters are provided below. They are identified with a blue dot for ease of identification. MPC/SC Connectors mate with most S/C connector versions in use today, and specifically with MIL-C-39012/35, /36, and Test Connectors and MIL-T-81490 connectors and original connectors produced with MIL-C-3989 interfaces. These connectors are normally supplied with the shells made from stainless steel (other materials are used for specific applications) with, gold plated and heat treated beryllium copper female contacts for the female connectors and gold plated brass contacts for the male connectors. MPC/SC Connectors are provided on a variety of MMC precision components and can be provided on most components on request.



NOTES:

- ① The diameter over the slots shall be $0.1197 \pm .001$ Dia. with a $0.091 \pm .00005$ Dia. X .187 long pin inserted in the contact.
- ② Dimensions flagged with this note can be inspected with Conn. Gage A015A.
- ③ Blue dot marking for ease of identification.

MAURY MICROWAVE CORPORATION
 PRECISION MICROWAVE COMPONENTS & INSTRUMENTATION

8610 HELMS AVENUE
 CUCAMONGA, CALIFORNIA 91730
 TELEPHONE 714-987-4715

ENGINEERING DATA 5E-050