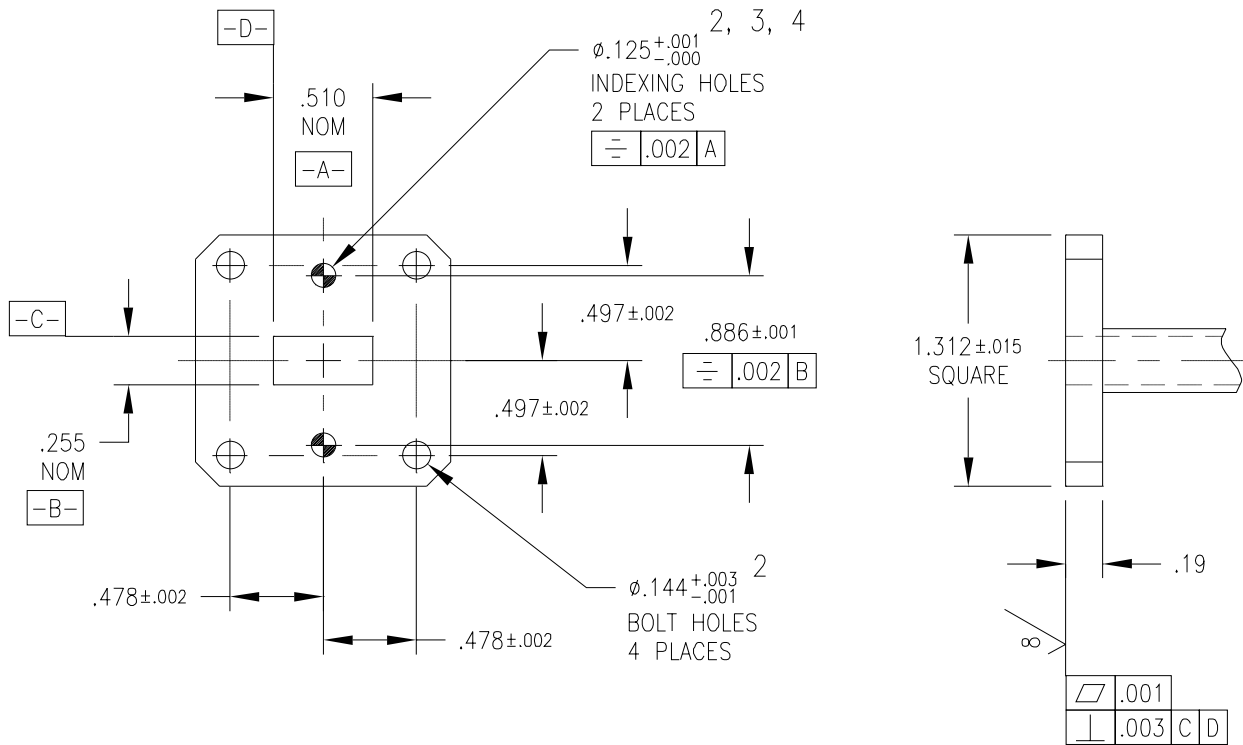




PRECISION WR51 FLANGE

MPF51A and B¹



Flange Designation	0.125 Indexing Holes
MPF51A	No
MPF51B	Yes

¹ This flange mates with most military and commercial WR51 flanges, (ref.: M3922/70-010, -011, -012, -022, -023 and -024).

² All holes are drilled in flange after flange to waveguide assembly, (when applicable).

³ Use indexing pins W996-4-1, W996-4-2, or W997-4 (see Maury data sheet 3A-996).

⁴ Indexing holes provided in MPF51B only.