

# UNIVERSAL WR159 FLANGES

## MPF159 INTERFACE DIMENSIONS

### Description

Maury Microwave's universal flange for WR159 waveguide components and instruments is a precision contact type flange designed to mate with both CPR and CMR EIA standard contact flanges. It is provided with precision indexing holes which provide excellent alignment and measurement repeatability. For simplicity of identification, this flange configuration is designated MPF159.

The MPF159 flange meets the requirements shown in **Figure 1**. It's size is the same as CPR159 flanges so that standard plastic flange covers (Maury 299-W-314) can be used.

Most Maury components in WR159 waveguide can be provided with the MPF159 flange. In addition, ruggedized indexing holes can also be provided; this is where the indexing holes are machined into stainless steel inserts which have been press fitted into the flange and consequently provide excellent wear characteristics. When ruggedized indexing holes are provided, the flange is designated MPF159R.

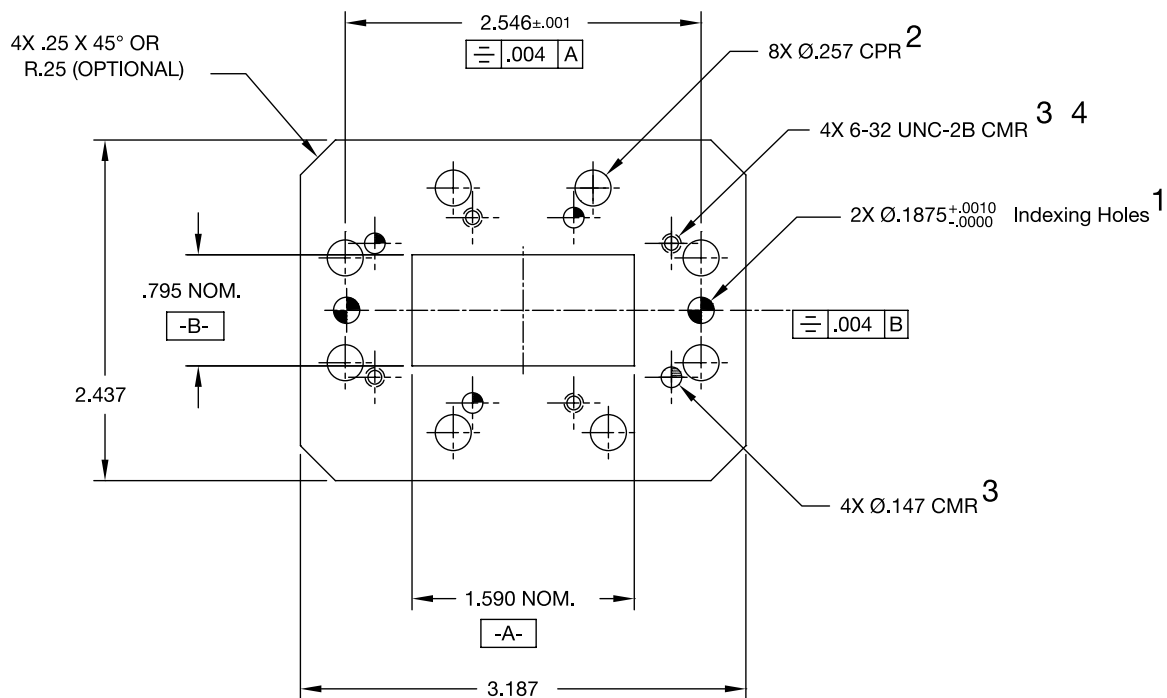


Figure 1

### Notes

- 1 Precision Maury indexing holes. (See Maury data sheet 3A-996 for indexing pins).
- 2 EIA CPR flange bolt hole pattern CPR159F & G, (reference EIA RS-271-A).
- 3 EIA CMR flange bolt hole pattern CMR159, (reference EIA RS-166).
- 4 As an option 0.147 diameter thru holes can be substituted for the 6-32 tapped holes; specify MPF159A.