

CONNECTOR GAGE KIT

PRECISION 7mm CO-PLANAR CONNECTORS (APC7)

Description

The model A028 connector gage is designed to measure and check the location of the inner conductor from the outer conductor mating plane of precision 7mm co-planar connectors and transmission lines, for example, the "A" dimension in **Figure 1** shown below. This relationship is particularly critical in precision applications where an excessive recessed condition of the center conductor will cause unwanted reflections and a protruding condition could result in damage to mating equipment. This connector gage provides a convenient, easy to use and highly reliable means for testing this co-planar relationship with exceptional accuracy.

The gaging operation is accomplished by means of a precision 1-11/16 diameter dial indicator assembly which is zero set to a co-planar condition and when engaged to a connector, will indicate the deviation of the inner conductor from the outer conductor mating plane. The accuracy of measurement when this gage is properly employed is better than ± 0.0002 with 0.00002 resolution (in inches). All functional gage parts are made from stainless steel in order to provide long wearing characteristics. The model A028 is provided in a wood instrument case with complete operating instructions.



Application

This model A028 connector gage will check the center conductor location of 7mm general precision connectors (GPC) and laboratory precision connectors (LPC) such as the APC7 connector, etc. In addition, this gage is useful in the assembly process for gaging the co-planar relationship of airline assemblies prior to installing the connector.

Precision co-planar connectors depend very heavily on a near co-planar condition between inner and outer conductors for proper electrical performance. We recommend that all precision connectors be tested for compliance to their co-planar interface requirements prior to being used and periodically on a routine basis to assure continued performance and to prevent possible damage to other equipment.

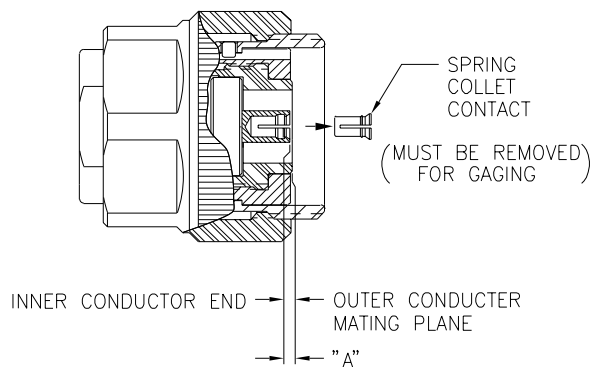


Figure 1 — APC7 connector