

# 14mm (GR900) INNER CONTACT ASSEMBLY

## Description

The model 2481A is an improved 14mm inner contact assembly for use with GR900 and MPC14 connectors (Maury MPC14 connectors are essentially the same as GR900).

The improved contact design offers three major advantages over the original design as follows:

### 1. Improved electrical performance.

The model 2481A provides more accurate concentricity alignment of beadless 14mm connectors than the original design. It also provides greater repeatability and consequently, improved measurement results because of its more uniform and rugged contact design. Refer to figure 1.

### 2. More rugged — longer life.

The model 2481A contact is a one piece design that is almost impervious to damage, which is a major failing of the original design. The original design consists of a fragile spring with six leaves that can easily snag and become damaged. Reliability and service life are considerably improved.

### 3. Reduced replacement cost.

The model 2481A consists of two parts; a contact and a retaining screw. Should damage occur to the contact, it alone has to be replaced instead of the complete assembly as in the original design. This means reduced cost to the user because the retaining screw is re-usable.

The model 2481A is a direct replacement for the original GR900 contact assembly (GR P/N 0900-2000 or Maury model 2480S1). Please refer to page 2 for an assembled view, a table identifying parts available and installation procedure.

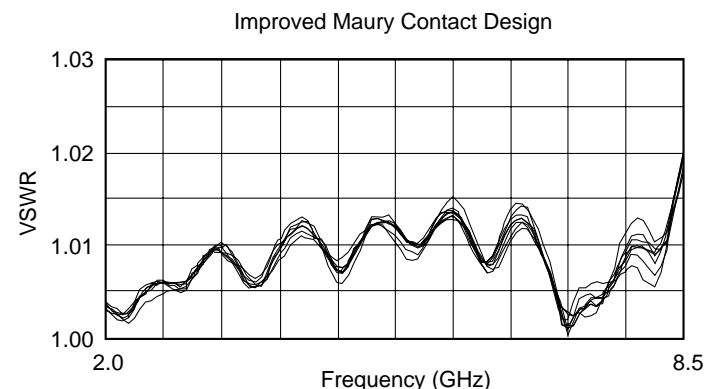
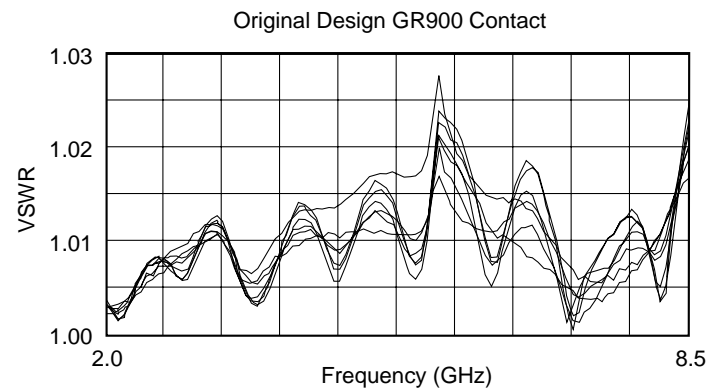


Original Design  
GR900



Improved Maury Design  
Model 2481A

Figure 1: Contact repeatability with a beadless airline and fixed termination



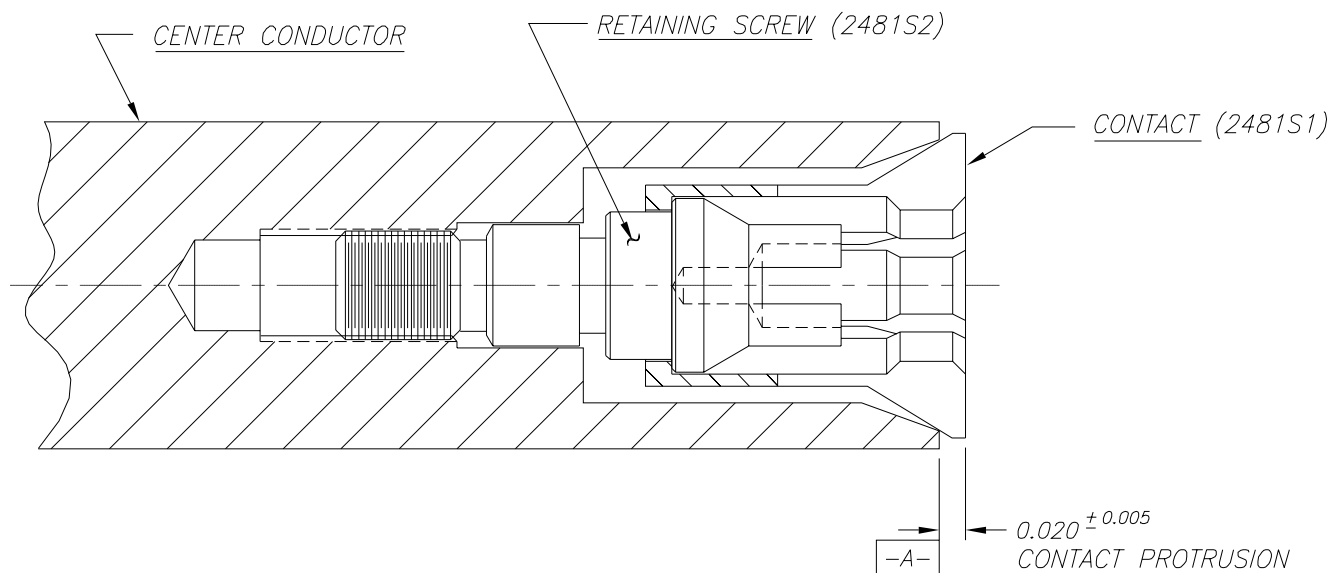


Figure 2: Cross-sectional view

Model	Description
2481A	14mm contact assembly (1 each 2481S1 and S2)
2481S1	Contact
2481S2	Retaining screw
2481S3	Installation/extraction tool



Model 2481S3 tool

## Installation Procedure

1. Remove the existing contact assembly from the center conductor.
2. Under a microscope, inspect the inside of the center conductor for any burrs that might have been left on the part if it was broached for a 5/32" hex. Remove these burrs. Also clean the internal tapered surface of the center conductor to remove any oxides.
3. Refer to figure 2; insert the threaded end of the model 2481S2 retaining screw into the slotted end of the model 2481S1 contact, then snap into place.
4. Engage the model 2481S3 installation/extraction tool and thread the contact assembly into the center conductor as shown in figure 2. Finger tighten.
5. Inspect the contact to see that it moves freely and will collapse to or below Plane -A- of the center conductor and springs back when released. A flat plate can be used to perform this inspection. Also inspect for contact protrusion specified in figure 2.